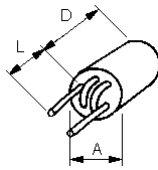
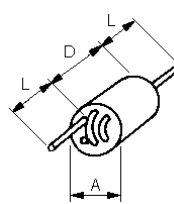


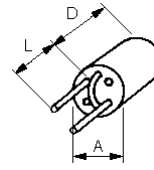
Wire Wound Bead (R6H Series)



R6H-3.0Ts



R6H-2.5Ts



R6H-2.0Ts

Unit : mm

A : 6.0 +- 0.3

D : 10.0 +- 0.3

L : 20 min

Description :

R6H Series (Wire Wound Bead) is a ferrite core with 2.0 / 2.5 / 3.0 turns copper wire winding directly. It's often used for signal filter or DC line filter to suppress outside noise at communication equipments because it's high impedance and large rated current.

| Part Number | Typical Impedance (ohm) | | Rated Current (MAX) | DC Resistance (MAX) | Operating Temperature (°C) |
|-------------|-------------------------|--------|---------------------|---------------------|----------------------------|
| | 25MHz | 100MHz | | | |
| R6H-3.0Ts | 910 | 705 | 5A | 20 m-ohm | -25 ~ +90 |
| R6H-2.5Ts | 730 | 670 | 5A | 20 m-ohm | -25 ~ +90 |
| R6H-2.0Ts | 530 | 610 | 5A | 20 m-ohm | -25 ~ +90 |

RoHS 2.0
2011/65/EU

