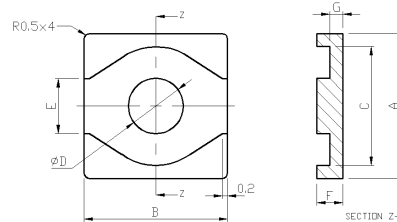
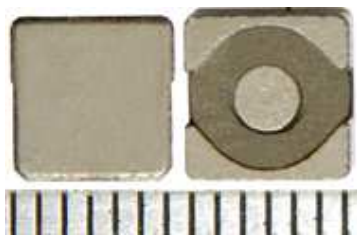


High Current Sendust Cores (6.4x6.4 Series)

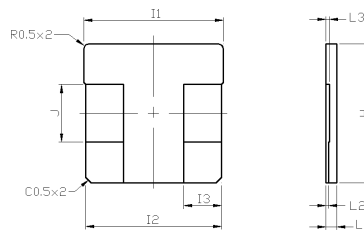
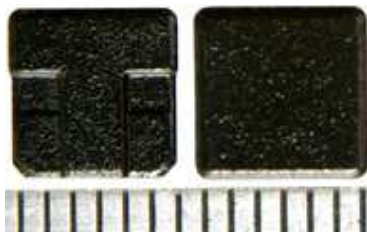
Description :

Sendust Core (**6.4x6.4 series**) has high operating frequency, high saturation current and can be designed for thermal aging free up to 200°C. The core is not easy breakdown up to 200°C when exposed to elevated environment temperature or generate elevated temperature by itself. A High Current Inductor (low height / low buzz noise / low DCR / low inductance) is consisted by coil and cores (E+E or E+I). It can divide to Sendust core, Fe-Si core, High Flux core and suitable for Notebook, Desktop computer, Server, VGA card , DC/DC converter and PDA.



E core

A : 6.4
B : 6.4
F : customized
G : customized



I core

H : 6.4
I : 6.4
L : customized

Electrical Specifications (reference only) :

| No | Core Shape | Total Height | LOA | Bias |
|----|------------|--------------|--------|-------|
| 1 | E + I | 3.55mm | 0.47uH | 15.0A |
| 2 | E + I | 3.70mm | 0.47uH | 25.0A |
| 3 | E + I | 2.90mm | 0.52uH | 14.0A |
| 4 | E + I | 5.30mm | 0.55uH | 12.0A |
| 5 | E + I | 3.55mm | 0.68uH | 12.0A |
| 6 | E + I | 4.50mm | 0.68uH | 8.5A |
| 7 | E + I | 4.60mm | 0.68uH | 10.5A |
| 8 | E + I | 3.40mm | 1.00uH | 8.5A |
| 9 | E + I | 3.55mm | 1.00uH | 8.5A |
| 10 | E + I | 3.60mm | 1.00uH | 20.0A |

| No | Core Shape | Total Height | LOA | Bias |
|----|------------|--------------|--------|-------|
| 11 | E + I | 3.70mm | 1.00uH | 20.0A |
| 12 | E + I | 4.10mm | 1.00uH | 12.0A |
| 13 | E + I | 2.75mm | 1.15uH | 8.5A |
| 14 | E + I | 4.00mm | 1.50uH | 6.5A |
| 15 | E + I | 4.55mm | 1.50uH | 6.5A |
| 16 | E + I | 4.65mm | 1.50uH | 6.5A |
| 17 | E + I | 4.70mm | 3.10uH | 5.0A |
| 18 | E + I | 4.05mm | 4.70uH | 5.0A |
| 19 | E + I | 4.40mm | 5.60uH | 4.0A |
| 20 | E + I | 4.55mm | 6.20uH | 5.0A |

* The reading values are typical only, will changed with different material, dimension and coil.

* Other materials and custom parts are also available.