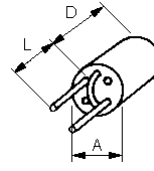
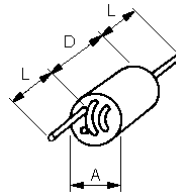
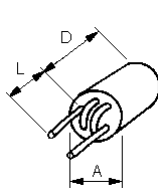


Wire Wound Bead (R6H Series)



R6H-3.0Ts

R6H-2.5Ts

R6H-2.0Ts

Unit : mm

A : 6.0 +/- 0.3

D : 10. +/- 0.3

0

L : 20 min

Description :

R6H Series (Wire Wound Bead) is a ferrite core with 2.0 / 2.5 / 3.0 turns copper wire winding directly. It's often used for signal filter or DC line filter to suppress outside noise at communication equipments because it's high impedance and large rated current.

Part Number	Typical Impedance (ohm)		Rated Current (MAX)	DC Resistance (MAX)	Operating Temperature (°C)
	25MHz	100MHz			
R6H-3.0Ts	910	705	5A	20 m-ohm	-25 ~ +90
R6H-2.5Ts	730	670	5A	20 m-ohm	-25 ~ +90
R6H-2.0Ts	530	610	5A	20 m-ohm	-25 ~ +90

RoHS 2.0
2011/65/EU

