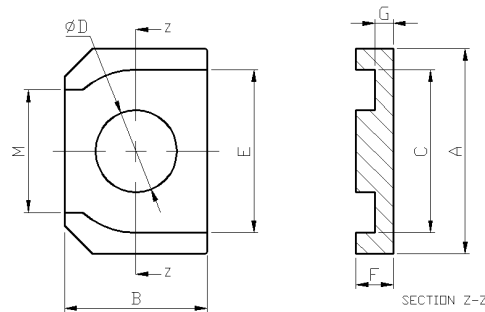
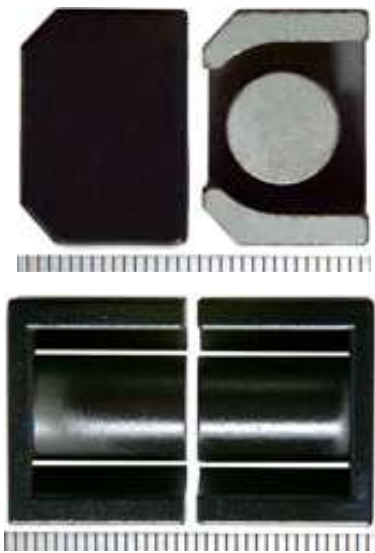


High Current Sendust Cores (22x15.5 Series)

Description :

Sendust Core (**22x15.5 series**) has high operating frequency, high saturation current and can be designed for thermal aging free up to 200°C. The core is not easy breakdown up to 200°C when exposed to elevated environment temperature or generate elevated temperature by itself. A High Current Inductor (low height / low buzz noise / low DCR / low inductance) is consisted by coil and cores (E+E or E+I). It can divide to Sendust core, Fe-Si core, High Flux core and suitable for Notebook, Desktop computer, Server, VGA card , DC/DC converter and PDA.



E core

A : 22.0

B : 15.5

F : customized

G : customized

Electrical Specifications (reference only) :

| No | Core Shape | Total Height | LOA | Bias |
|----|------------|--------------|--------|------|
| 1 | E + E | 21.1mm | 7.0uH | 48A |
| 2 | E + E | 21.1mm | 8.8uH | 33A |
| 3 | E + E | 28.0mm | 11.5uH | 43A |
| 4 | E + E | 28.0mm | 13.0uH | 40A |
| 5 | E + E | 28.0mm | 13.5uH | 30A |

| No | Core Shape | Total Height | LOA | Bias |
|----|------------|--------------|--------|------|
| 6 | E + E | 28.0mm | 16.3uH | 27A |
| 7 | E + E | 34.6mm | 20.0uH | 35A |
| 8 | E + E | 34.6mm | 22.0uH | 26A |
| 9 | E + E | 34.6mm | 40.0uH | 22A |
| 10 | E + E | 43.6mm | 50.0uH | 20A |

* The reading values are typical only, will changed with different material, dimension and coil.

* Other materials and custom parts are also available.